



# GP series GP 12260



## Valve Regulated Lead Acid Battery

Maintenance-Free Sealed Lead Acid Battery.

Absorbent Glass Mat (AGM) technology for efficient gas recombination of up to 99%.

## Design for Standby Power Applications

### 【Design Life】

Up to 5 Years in Standby Service at 25°C

Eurobat (20°C) : 3-5 years, Standard Commercial

### 【Operating Temperature Range】

Nominal Operating Temperature : 25°C (77°F)

Discharge : -15°C ~ 50°C (5°F~122°F)

Charge: -15°C ~ 40°C (5°F~104°F)

Storage: -15°C ~ 40°C (5°F~104°F)

### 【Float Charging Voltage】

13.5 ~ 13.8 VDC/Unit at 25°C (77°F)

### 【Equalization Charging Voltage】

14.4 ~ 15.0 VDC/Unit at 25°C (77°F)

### 【Self Discharge】

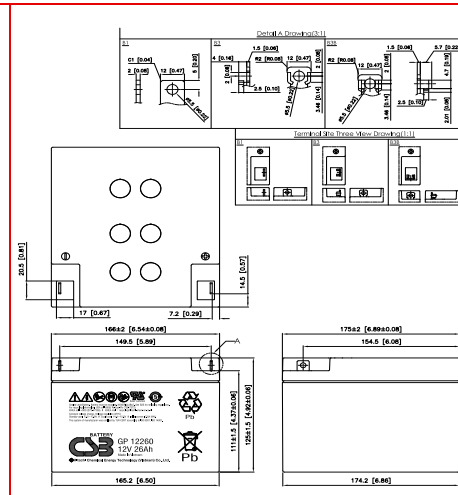
Less than 10% after 90 days, can be stored up to 6 months at 25°C (77°F);

Fully recharging is required before usage, and charged sooner if stored at higher temperature than 25°C (77°F).

## Specification

Design according with IEC 61056-1/2: 2012

Nominal Voltage	12V (6 cells per unit)		
Nominal Capacity	26 Ah @20hr-rate to 1.75V per cell @25°C (77°F)		
Weight	Approx. 8.45 Kg (18.62 lbs)		
Maximum Discharge Current	350A (5sec)		
Internal Resistance	Approx. 9.9mΩ		
Short Circuit Current	635A		
Maximum Charge Current	7.8A		
Terminal types	B1/B3/B3B terminal to accept M5 bolt		
Terminal tightening torque	30.4±6.1 Kgf-cm / 26.4±5.3 Lbf-in / 3.0±0.6 N-m		
Container Material	ABS (UL 94-HB) & Flame Retardant (94-V0) available upon request		
Dimensions	Length (L)	166.0±2.0 mm	6.54±0.08 inch
	Width (W)	175.0±2.0 mm	6.89±0.08 inch
	Container Height (h)	125.0±1.5 mm	4.92±0.06 inch
	Overall Height (H)	125.0±1.5 mm	4.92±0.06 inch



### Constant Current Discharge Characteristics Unit: A (25°C, 77°F)

F.V/Time	5 MIN	10MIN	15MIN	30MIN	60MIN	90MIN	2HR	3HR	5HR	8HR	10HR	20HR
1.60V	106	69.0	52.8	32.7	19.6	14.3	11.5	8.14	5.24	3.46	2.82	1.47
1.67V	99.0	65.9	51.1	32.3	19.5	14.2	11.4	8.13	5.23	3.43	2.79	1.42
1.70V	95.7	64.6	50.4	32.2	19.4	14.1	11.3	8.12	5.22	3.42	2.78	1.41
1.75V	89.7	62.0	49.0	31.6	19.3	14.0	11.2	8.11	5.21	3.38	2.74	1.37
1.80V	83.3	59.4	47.5	31.1	19.2	13.9	11.1	8.10	5.19	3.35	2.70	1.33
1.85V	76.7	56.5	45.8	30.5	19.1	13.8	11.0	8.09	5.17	3.31	2.66	1.29

### Constant Power Discharge Characteristics Unit: W (25°C, 77°F)

F.V/Time	5MIN	10MIN	15MIN	30MIN	60MIN	90MIN	2HR	3HR	5HR	8HR	10HR	20HR
1.60V	1270	828	634	392	235	172	138	97.7	62.9	41.5	33.8	17.6
1.67V	1181	790	610	385	234	171	137	97.6	62.8	41.2	33.5	17.1
1.70V	1139	772	602	382	233	170	136	97.5	62.7	41.0	33.3	16.9
1.75V	1071	744	586	378	232	169	135	97.4	62.6	40.6	32.9	16.5
1.80V	999	713	570	373	231	168	134	97.3	62.3	40.2	32.4	16.0
1.85V	920	678	550	367	230	167	133	97.2	62.1	39.8	32.0	15.6

Please refer to the official site for the latest rating confirmation. URL: [www.csb-battery.com](http://www.csb-battery.com)

Issued: 200213

## Sales Offices

日立化成能源科技股份有限公司  
Hitachi Chemical Energy Technology Co., Ltd.

### BUSINESS HEADQUARTERS

Tel: +886-2-2880-5600

Fax: +886-2-2888-3300

### USA OFFICE

Tel: +1-817-244-7777 / 1-(800)3-CSB-USA (272872)

Fax: +1-817-244-4445

### SHENZHEN OFFICE (CHINA)

Tel: +86-755-8831-6488, 8831-6775

Fax: +86-755-8831-6075

### EUROPE (EMEA) OFFICE

Tel: +31(0)180-418-140

Fax: +31(0)180-418-327

### SHANGHAI OFFICE (CHINA)

Tel: +86-21-5046-1622, 5046-0833

Fax: +86-21-5046-1046

### TAIPEI OFFICE

Tel: +886-2-2880-5600

Fax: +866-2-2888-3300

### BEIJING OFFICE (CHINA)

Tel: +86-10-5820-5336, 5820-5338

Fax: +86-10-5820-3053

Recognized under UL 1989,  
and certified by ISO 9001, 14001.

